

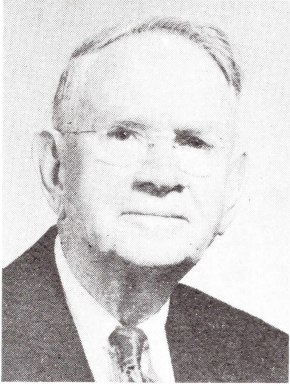
As Brother Williams left to assume his new responsibilities, Reverend Flem Van Meter was called to pastor Highway Tabernacle and his faithful message rang from the pulpit as he carried the heavy load of the pastorate which was complicated by the great depression of 1931. Despite the lack of employment and a reduction in the income experienced by many of the members of the congregation, the indomitable faith and spiritual resources of Pastor Van Meter was a constant inspiration to all of our members.

Brother Van Meter strived at all times to lead his flock into a deeper experience with God. His ministry exuded love and he most certainly practiced and possessed his favorite theme.

One of his greatest desires was to see Highway establish out-station works, but this was never realized during his tenure as Pastor.

In 1936 Brother Van Meter was called to serve as Superintendent of the Eastern District, since Reverend Roswell Flower was leaving that position to become Secretary of the General Council in Springfield, Missouri.

Pastor Flem Van Meter was called Home by his Lord in July, 1954 after a life of outstanding service in the ministry.



**Rev. Flem Van Meter  
1930 - 1936**

**THE GOSPEL WAGON** of the Highway Mission Tabernacle. Services were begun on June 4, 1895 and continued for many years. Early in 1921 the body of the Gospel Wagon was put on the chassis of an auto. It was equipped with an organ, electric lights, benches, chairs and a speaker's platform.

