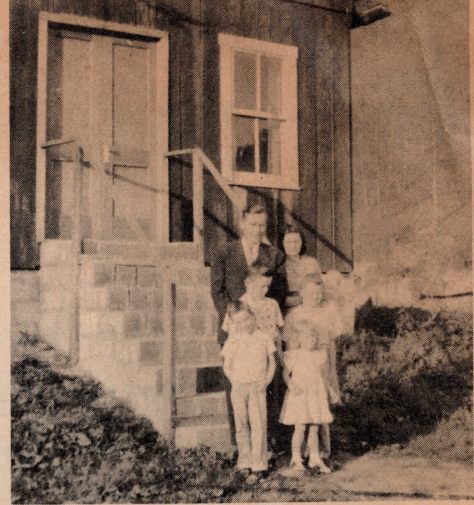




Tim Branch Sunday school at Epson, Ky. Pastor Lois Anderson on the left



Pastor Benjamin Frye and family in front of the church in Burkhart, Ky.

these churches are almost indigenous. Attendance averages about fifty-five at Panbowl, a church built over the creek with eighty steps leading up to the parsonage. Louise Heidorn and two co-workers labor here.

Visible progress is slight at Tim Branch where I pastor, but the faithfulness of the people has resulted in God's blessings. A church and a parsonage are being built here by faith. Also, people in other localities are now requesting workers and churches.

Like foreign missionaries, mountain workers depend upon offerings from churches and individuals for support. When support fails, they must leave,

for seldom can they find nearby employment.

Are mountain missionaries worthwhile? The testimony of Laura Purcell, a young lady who was saved through this ministry, answers this question:

"I was led to Christ by a faithful Sunday school teacher, one of the missionaries in the mountains of Kentucky. Since then my only desire has been to serve Christ and to tell others of His redeeming love.

"For several years I have wanted to enter a Bible school to study the Word of God that I might do a more effective work for Christ. Because of

circumstances at home it looked impossible to do so, yet all things are possible with God. The Lord made a way when there was none and gave me the desire of my heart. Ten days after entering Bible school, I received the baptism of the Holy Spirit. The Lord has been so good and faithful in supplying my every need and guiding me each step of the way.

"Pray for the work in Kentucky that the Lord will bless and save souls and use them for His glory."

Inquiries concerning openings for gospel work in the Kentucky mountain area may be sent to M. A. Mangold, Route 1, Jeffersonville, Ky., who is the administrator of the mountain work. Contribution designated for the Kentucky mountain work should be sent to the Home Missions Department, 434 W. Pacific, Springfield, Mo.



Church and Sunday school annex at Jeffersonville, Ky.



Church in West Prestonsburg, Ky.