



## MY LIFE

Just a vessel, nothing more;  
An earthen vessel – clay;  
Shaped by the Master and fashioned by Him  
How will He use me today?

It may be the fashion is coarse or rough  
Squatty or graceful and thin,  
Ornamented or no matters not,  
What matters is, what lies within.

Take, Lord, my vessel – purge, purify.  
Fill with Thy Spirit. Thyself glorify.

A vessel for service, no place Lord for self,  
Used and o'er flowing, not left on the shelf.

Take, Lord, my vessel where e'er you see fit.  
Make of this vessel what you want of it.

When my vessel shall crumble and return to the ground,  
May the treasure poured forth to His glory, abound.

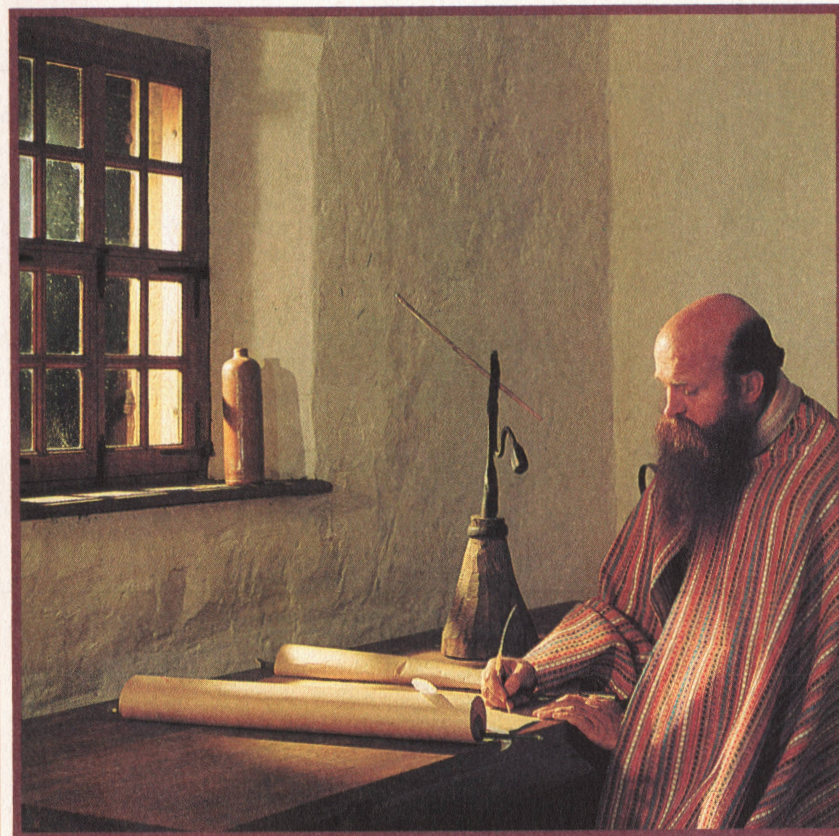
– Polly C. Strong

Glenn Estelman Photography

## TREASURE IN EARTHEN VESSELS

*We have this treasure in  
earthen vessels, that the  
excellency of the power may  
be of God, and not of us.*

2 Corinthians 4:7



## Highway Tabernacle

18th and Spring Garden Streets  
Philadelphia, Pa. 19130

Rev. Stephen Bogdan, Pastor ☆ Ph: 563-9192  
379-5974



*The Lord's Day*  
November 16, 1986

## **pastor's paragraph**

It occurred to us the other morning in our prayer time that we should share our prayer list with you. As we pray, we mention each of the craftsmen who have worked on Highway Tabernacle. This is sacred ground.

Just as consecrated men of old build the Tabernacle, we are asking the Lord to make His presence, wisdom and enabling real to each of these men.

*Exodus 31 states, "...see I have called and filled them with the spirit of God in wisdom and in understanding and in knowledge and in all manner of workmanship to devise cunning works...and in the hearts of all that are wise hearted I have put wisdom, that they may make all that I have commanded."*

Insert this list in your Bible. Remember them in prayer for the duration of the rebuilding program.

John McGinnis - Consulting Manager of Construction  
Andrew Osborne - Structural Architect  
Brian Newswanger - On-site Coordinating Architect  
Lisa Newswanger - Decorator  
Patrick Murphy - Rebuilder of Pipe Organ  
Bruce C. Timins - Carpenter  
Eric Kaplan - Electrician

There are many other men working in the building. How wonderful it would be upon completion of the building to see these men wholly serving the Lord.

\* \* \* \* \*

*Draw nigh to God, and he will draw nigh to you.*  
*James 4:8*

## OPPORTUNITIES FOR SERVICE THIS WEEK

Sunday - Sunday School	9:45 a.m.
Morning Worship	10:45 a.m.
Korean Service	2:00 p.m.
Intercessory Prayer	5:30 p.m.
Choir Practice	6:00 p.m.
Evening Worship	7:00 p.m.
Tuesday - High Rise Ministry	7:00 p.m.
Spring Garden Towers	
Thursday - Prayer and Bible Study	8:00 p.m.
Korean Service	8:00 p.m.
Friday - International Fellowship	6:30 p.m.

\* \* \* \* \*

Betty Roberson will be leading the Spring Garden Towers ministry this week with craftwork.

Mrs. Bogdan will be addressing the Christian Women's Club of Northeast Philadelphia on November 19th. The topic of her luncheon address will be "Dolls of the Generations."

For the November International Fellowship, our special speaker will be our own Ashiwe Undie, who fellowships with us while pursuing his studies in pharmacology at the University of Pennsylvania. Ashiwe is originally from Nigeria. You won't want to miss his account of God's leading in his life. Plan to be with us for dinner at 6:30 p.m. on the 21st of November.



Included in your bulletin this week is a reprint of the article in the Action magazine of the Penn-Del District of the Assemblies of God, relating the story of the fire at Highway.







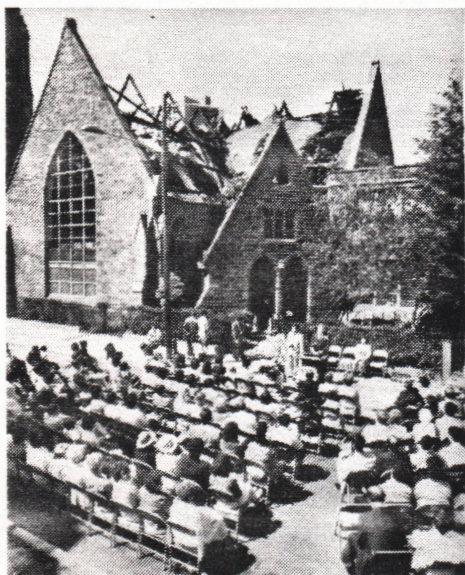
# AROUND THE DISTRICT ... and across the fellowship

## HIGHWAY TABERNACLE, PHILADELPHIA - "THE GATES OF HELL WILL NOT PREVAIL AGAINST IT"

The congregation of Highway Mission Tabernacle celebrated their 92nd anniversary this month. As the second oldest congregation of the Assemblies of God in the world, they have sent forth some of the first missionaries and a host of pastors, educators and Christian workers. Two of her pastors were general superintendents of our movement.

In recent years as the neighborhood deteriorated and suburban churches grew, this citadel of faith began to decline. Under the direction of Pastor Howard Roberson, a century old historic church was purchased in 1960 on direct lines of public transportation. Still the center city location was less than desirable.

By the early 70's, a rebuilding move started in center city. Now, Highway Tabernacle is placed in a neighborhood billed by the press as "one of the most strategic locations in the city." In the last decade, Philadelphia Community College was built in the next block going east with a student enrollment of nearly 2,000. Antioch college moved in the same block going west three years ago. Construction on twin towers across from the church housing 286 apartments will be completed in the fall of 1987. Everywhere one looks in this neighborhood, apartments and condominiums are being made ready for residents.



Highway Tabernacle's many community outreaches include a luncheon program for college students, a college and career fellowship, weekly Bible studies, crafts and social programs for the elderly at Spring Garden Towers, an international fellowship and



subsidizing a mission of Korean believers. An intercessory prayer group focused on revival.

Thursday evening, August 21st in the midst of Pastor Bogdan's message we heard that dreaded word "FIRE". Our mission outreach group of Koreans were meeting upstairs in a small chapel. We evacuated the building. For the next seven hours with anguish of spirit we watched fire rage which destroyed the roof and devastated the sanctuary.

The skilled firemen formed a line of defense and the annex building containing offices, kitchen, fellowship hall and chapel were spared, sustaining smoke and water damage.

It seemed Satan had succeeded in dealing the death blow to this historic congregation. Yet, God gave each member of the congregation a divine impartation of faith to respond to the press. As the media and press converged upon them, God moved in their hearts. Every TV and radio station gave favorable coverage. Newspaper headlines read, "A FAITH STANDS STRONG IN A CHURCH'S SMOLDERING RUINS" ... "AMID ASHES-HOPE."

After the fire, the entire building was sealed off by the fire company. We decided to meet on the street for Sunday morning services to let the community know we were still available to them. The police department sealed off the street. Our Korean mission congregation and their pastor joined us. We had media coverage throughout the services and this was aired on the evening news. What thrilled us most was the picture of the service on the front page of the Philadelphia Inquirer with Pastor Bogdan's sermon scripture under the picture reading the words of Jesus when He said, "I will build my church and the gates of hell will not prevail against it."

Strengthening prayer support will be needed in this next year of rebuilding. Much of the building is restorable. Kindness upon kindness has ministered to us from fellow churches, community leaders and businesses. Many, many new contacts and friendships have been made in the area. Every new day provides new ways to witness and make Christ known. There is a beautiful spirit and resolve not to break-down but to break through in making God's love believable to the many hurting, lonely people in this downtown location. Your prayers will be valued.

*(Note from the District Superintendent - Although the church was covered with insurance, it was not enough to adequately replace the losses sustained. We encourage our churches to assist the Highway Tabernacle with their rebuilding project. Let's not let the Philadelphia community outdo our churches in helping this church! Churches wishing to contribute will receive World Ministries Credit when sending monies through the district office.)*

